



Provincie Flevoland

Late Mesolithic Site N23 Flevoland



Excavation and preliminary results



Provincie Flevoland

Location





Provincie Flevoland

Location





Provincie Flevoland

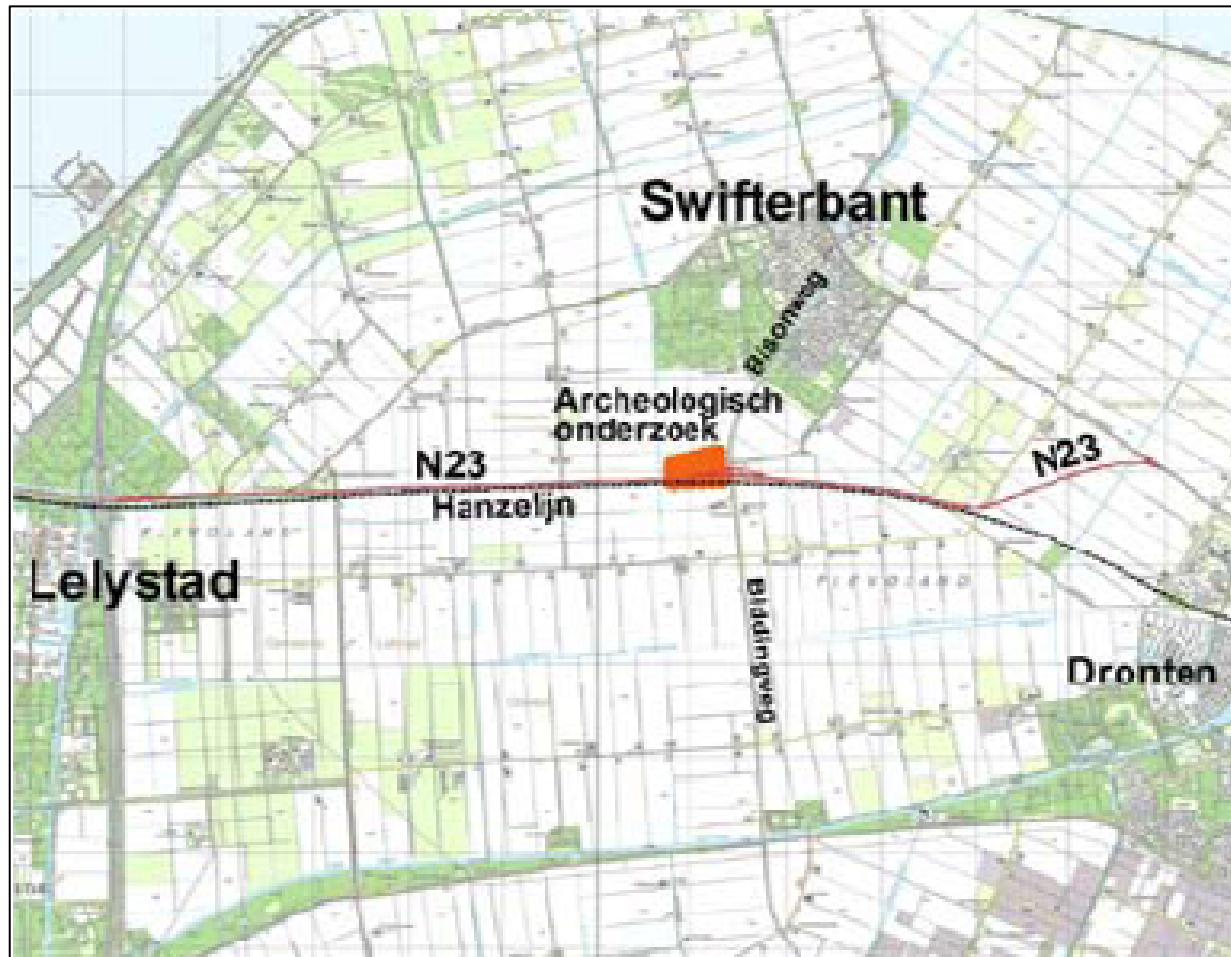
Location





Provincie Flevoland

Location





Provincie Flevoland

Research by coring

Drilling with aqua-lock



Different soil layers

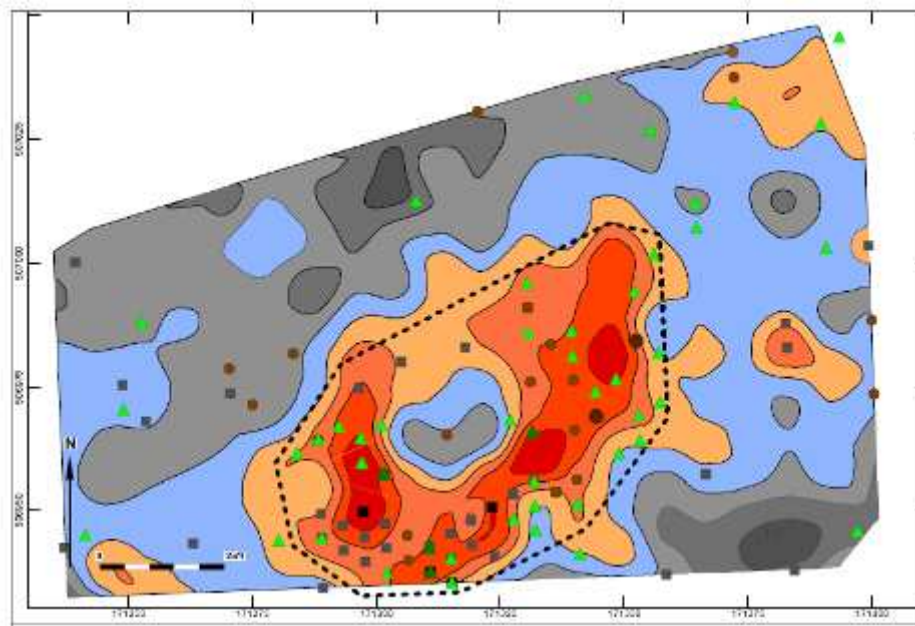




Provincie Flevoland

Research by coring

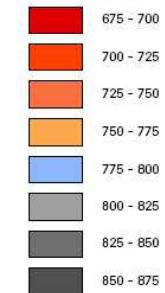
Sand dune with archeological finds



Legenda

- Vuurstenen artefact (spoor)
- Vuurstenen artefact (weinig)
- Hazelnootdoppen (spoor tot weinig)
- Hazelnootdoppen (veel)
- Houtskool (veel)
- Houtskool (zeer veel), vermoedelijk haardkuil
- Begrenzing vindplaats 5 (3900 m2)

Hoogteligging van de top van het dekzand in m -NAP



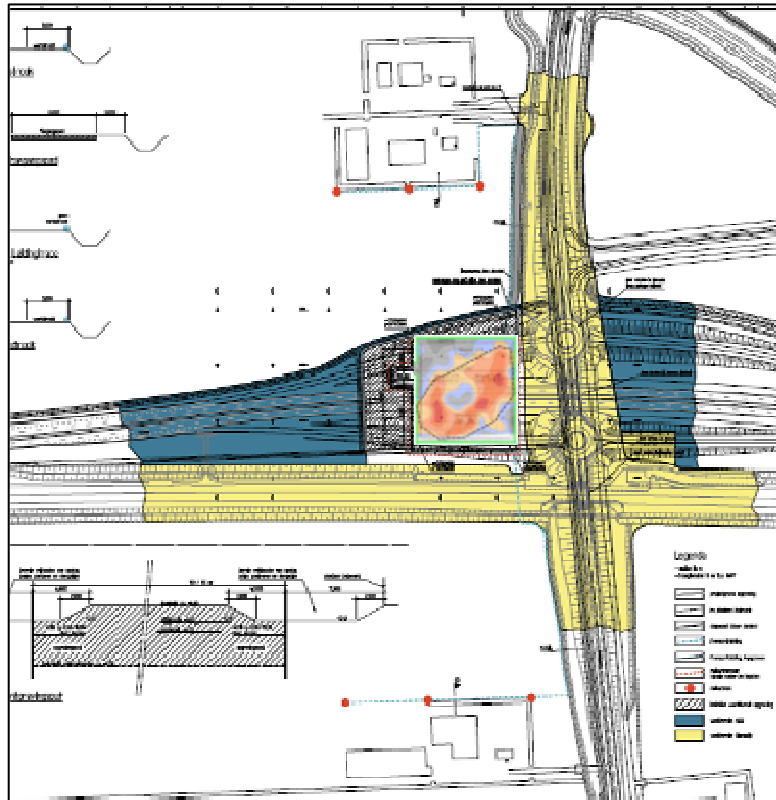


Provincie Flevoland

Selection

Site (3900 m²) in highway N23

Site and environment (6800 m²)
to be excavated





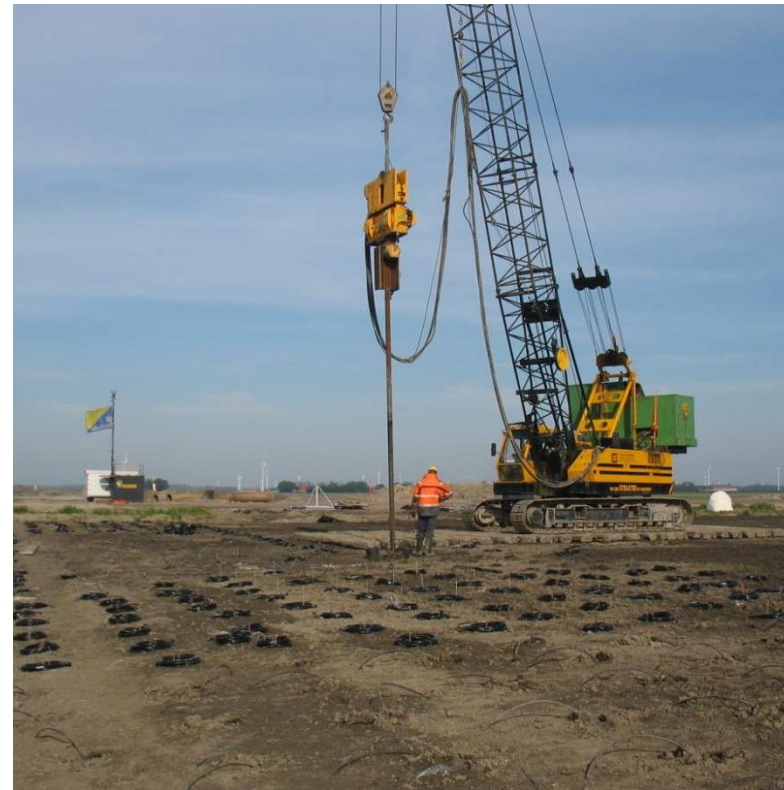
Provincie Flevoland

Technical preparations

9,5 m deep sheet pile wall



Layer of 1,5 m water glass
(silicates of soda and potash)





Provincie Flevoland

Archaeological preparations

Removing 20.000 m³ top soil



Preparing archeological unit





Provincie Flevoland

Excavation method

Collect in layers 50x50x5 cm



Transport to sieving installation





Provincie Flevoland

Excavation method

Sieving over 2mm grid



Wet residue





Provincie Flevoland

Excavation method

3 days drying 40°C



Dividing finds





Provincie Flevoland

Excavation method

Determination of finds



Input into computer

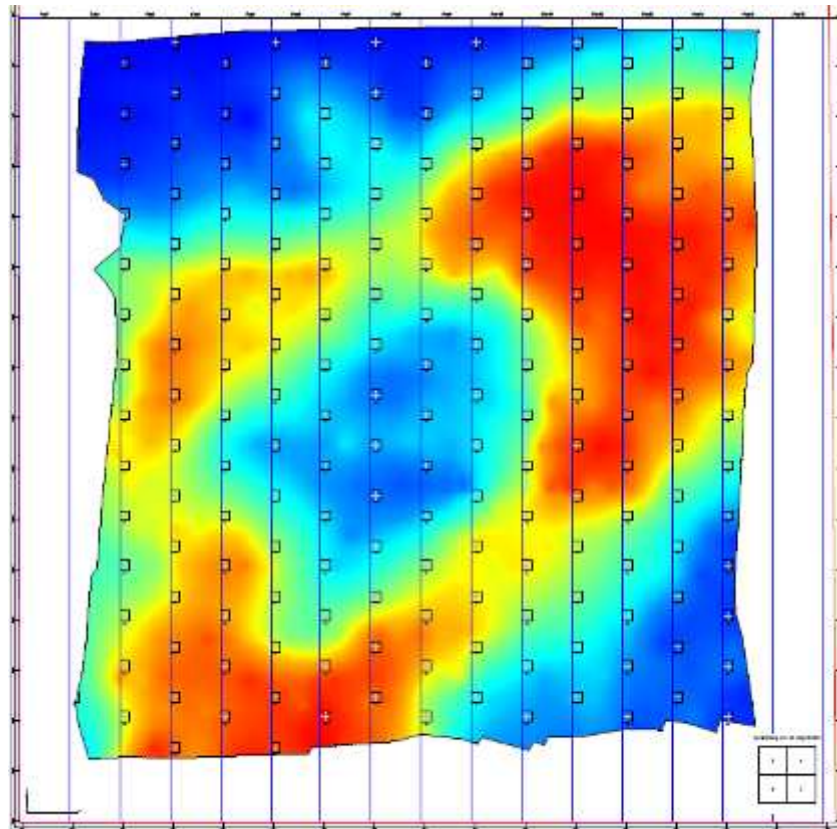




Provincie Flevoland

Preliminary results

Site



High and low

- Sandy dune
- Difference high – low max. 1,5 m.
- Overgrown by peat (post Neolithic)

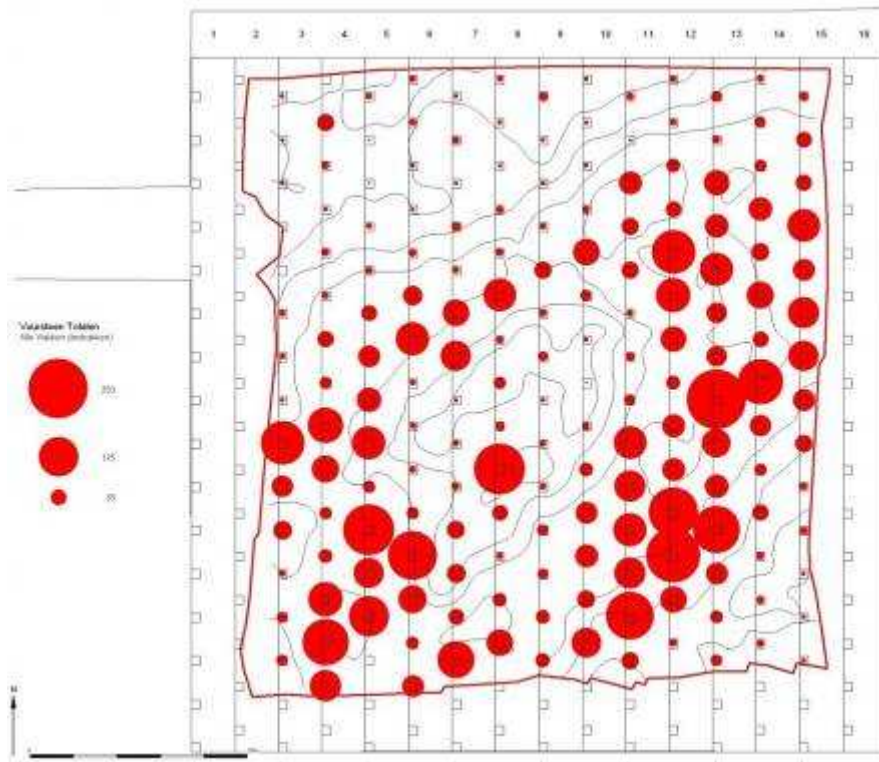




Provincie Flevoland

Preliminary results

Flint



Spatial distribution

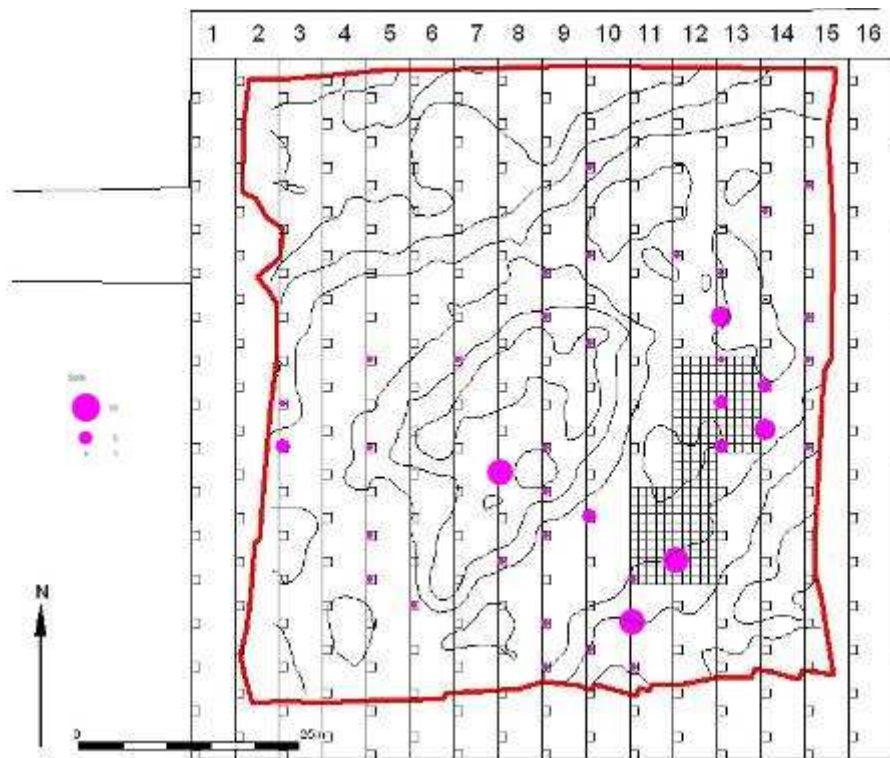
- Several concentrations
- Mainly higher area
- Squares meters with over 300 pieces flint
- Over 9000 pieces from 184 test pits



Provincie Flevoland

Preliminary results

Arrowheads



Spatial distribution

- Several concentrations
- 80% of the tools are arrowheads
- All date around 7.000 bc

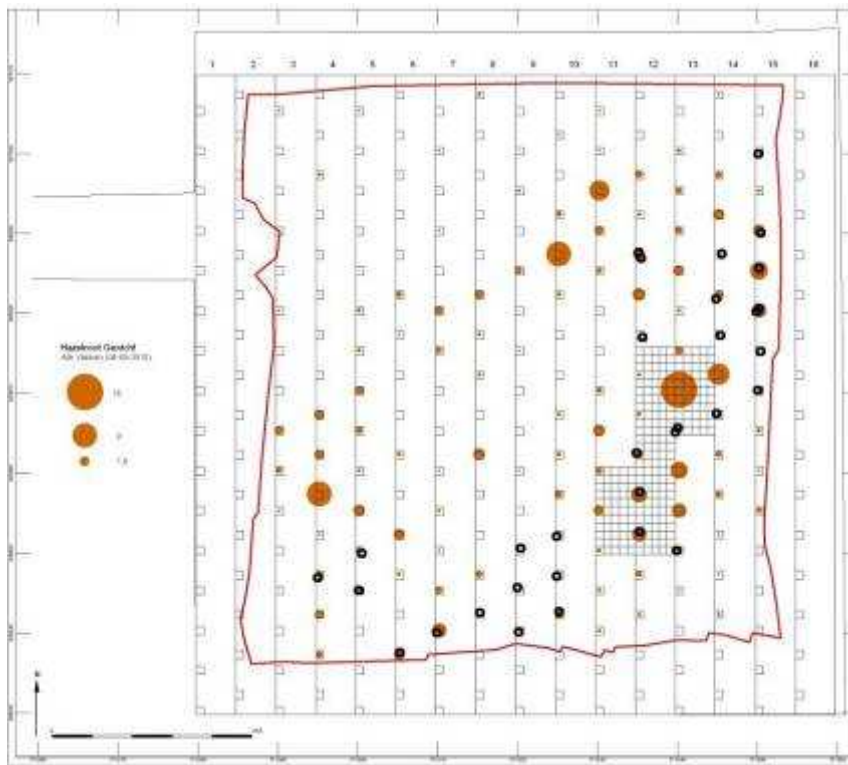




Provincie Flevoland

Preliminary results

Hazelnut



Spatial distribution

- Carbonized shells
- Only on higher grounds
- Over 3000 pieces from 184 test pits

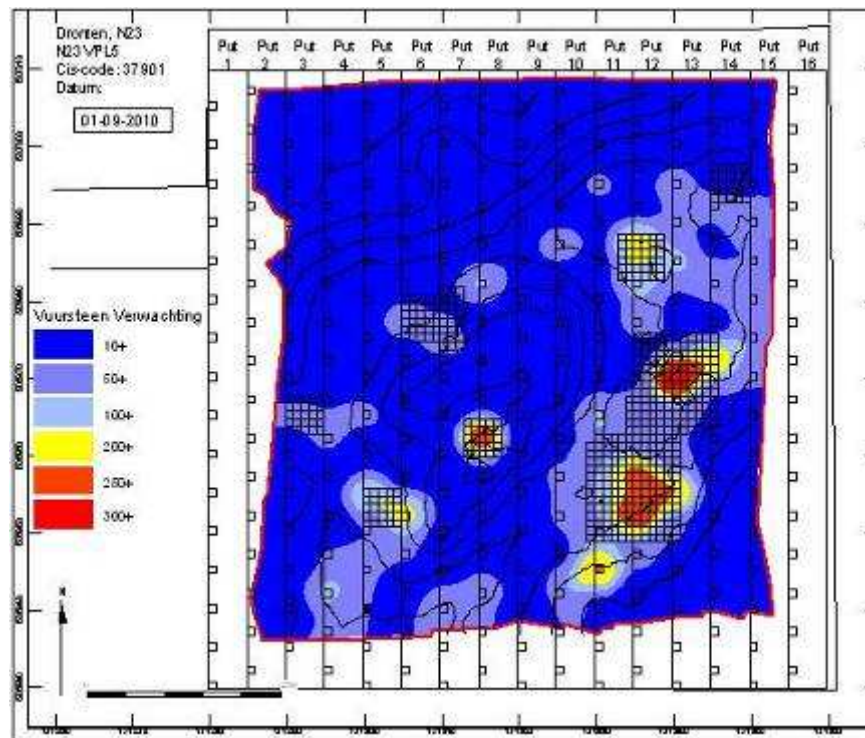




Provincie Flevoland

Preliminary results

Special concentrations



Special content

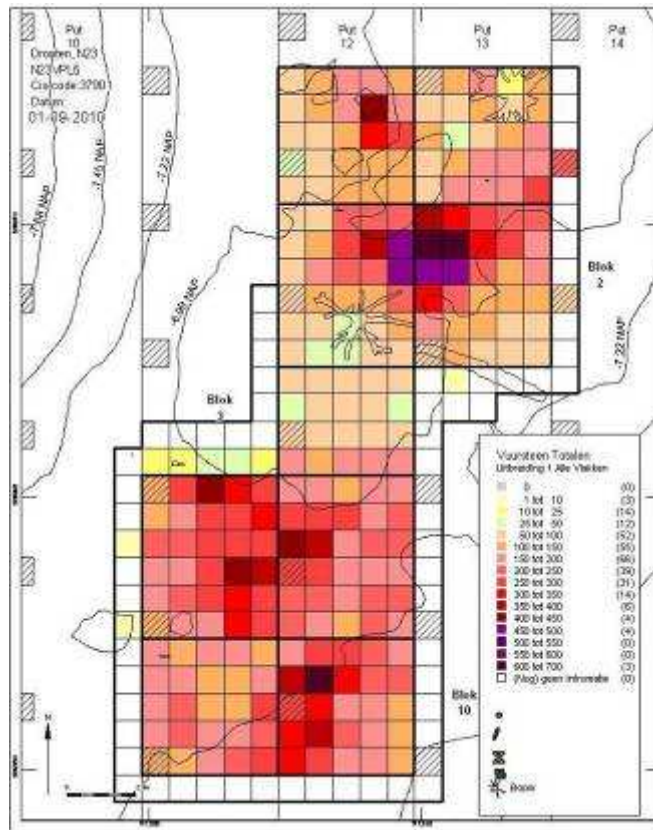
- Several concentrations
- 6 flint locations
- 1 location other tools than arrowheads
- 2 hazelnut locations
- Excavated in blocks of min. 25 m²



Provincie Flevoland

Preliminary results

Special concentrations



Spatial distribution

- Large double concentrations
- Up to 600 flints / m²





Provincie Flevoland

Preliminary results

Fire pits (?)



Spatial distribution

- Several concentrations of fire pits
- Only on east and south side
- Used for ? (heath / fire) or **tar** production





Provincie Flevoland

Preliminary results

Neolithic oak forest



Stumps and trunks

- Over 30 oak tree stumps
- Diameter trunk up to 80 cm
- Drowned in peat ground
- Thin trees (< 30 cm) broken in a NW-storm





Provincie Flevoland

Final results

- End of excavation: October 2010
- First evaluation: spring 2011
- Analysis: autumn 2011
- Publication: October 2012

